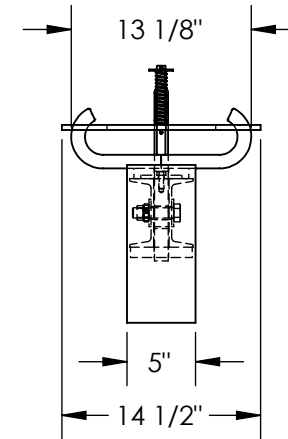
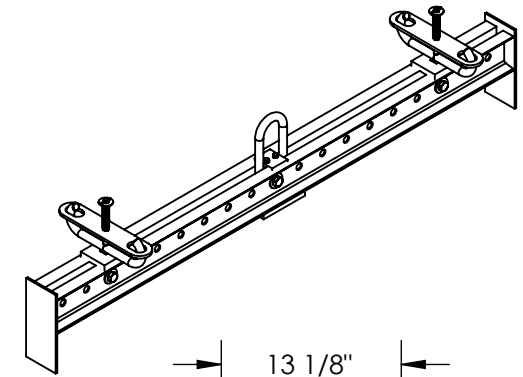
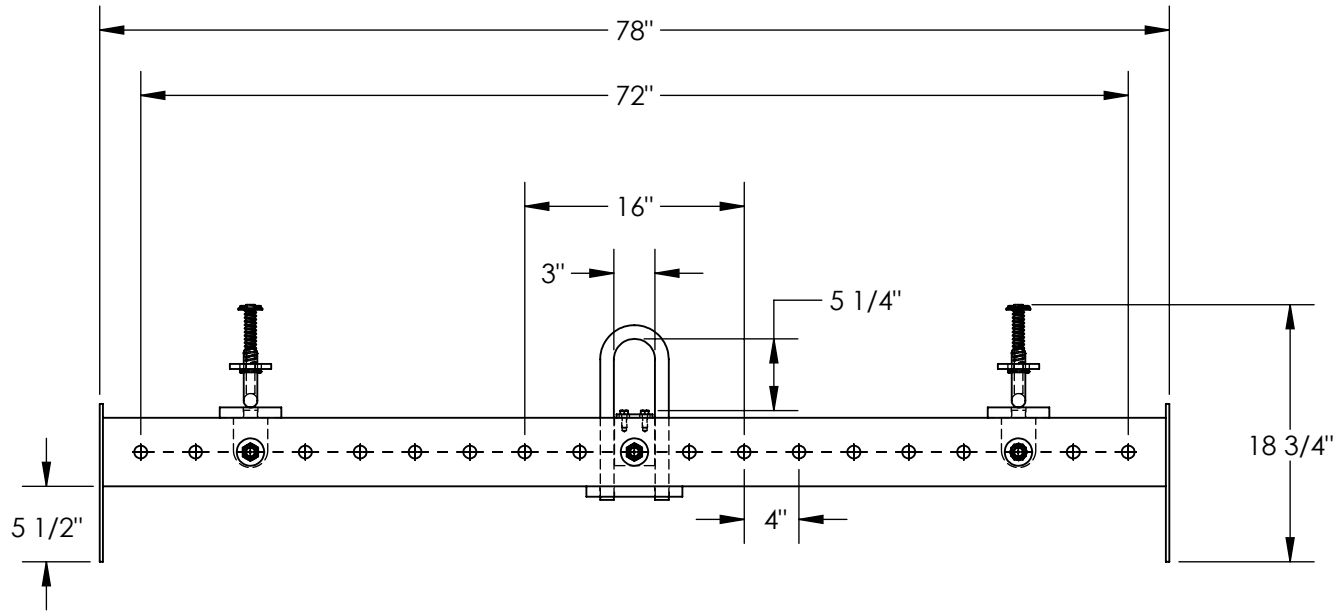


# BASKET LIFTING BEAM - SBM-40-BLB

APPROX WEIGHT: 134.29 lbs.  
 DOES NOT INCLUDE WEIGHT OF POWER OR PACKAGING!!!

\*\*\* ANY ADDITIONS, DELETIONS, OR OMISSIONS MUST BE CORRECTED ON THIS DRAWING AS THIS DRAWING WILL BE CONSIDERED ALL INCLUSIVE \*\*\*

ALL GRAPHICS PROVIDED ARE FOR REFERENCE ONLY. IF CERTAIN DIMENSIONS ARE CRITICAL PLEASE VERIFY THOSE DIMENSIONS WITH YOUR SALESPERSON



DIMENSION TOLERANCE  $\pm 1/4"$

## STANDARD FEATURES

- MODEL NUMBER: SBM-40-BLB
- OVERALL HEIGHT: 18 3/4"
- OVERALL DEPTH: 14 1/2"
- OVERALL WIDTH: 78"
- MAX ADJUSTMENT WIDTH: 72"
- MIN ADJUSTMENT WIDTH : 16"
- ADJUSTABLE IN 4" INCREMENTS
- MAX CAPACITY: 4,000 LBS EVENLY DISTRIBUTED
- BAILS DESIGNED FOR HEAVY DUTY SLINGS
- TOUGH BAKED IN POWDER COATED BLUE FINISH ON FRAME
- TOUGH BAKED IN POWDER COATED YELLOW FINISH ON HOOKS & BAILS

## SPECIAL FEATURES

NONE

APPROVAL	I, THE UNDERSIGNED, AGREE THAT THE PRODUCT AS REPRESENTED SATISFIES DESIGN AND DIMENSION REQUIREMENTS. I ALSO ACKNOWLEDGE MY DUTY TO CONFIRM PRODUCT AND INSTALLATION COMPLIANCE WITH ALL APPLICABLE FEDERAL, STATE AND LOCAL REGULATIONS AND STANDARDS.	
	<b>ANY MODIFIED UNITS ARE NON-RETURNABLE</b>	
	[ ] As drawn      [ ] As marked	
	Signed: _____ Date: _____	
Printed Name: _____		
<b>LEAD TIME WILL START UPON RECEIPT OF SIGNED APPROVAL DRAWING</b>		

FOR INTERNAL USE ONLY PROJECT SIGN OFF	
SALES	
ENG.	
FAB.	
POWER	

DISTRIBUTOR'S NAME:		P.O.#
VESTIL MANUFACTURING		X
DRAWN BY:	DATE:	W.O.#
B.HORN	08/15/2016	X
REFERENCE:	SCALE:	FILE NAME:
X	1:14	08-007-393
QUOTED LEAD TIME:	QUOTE #	
X	X	